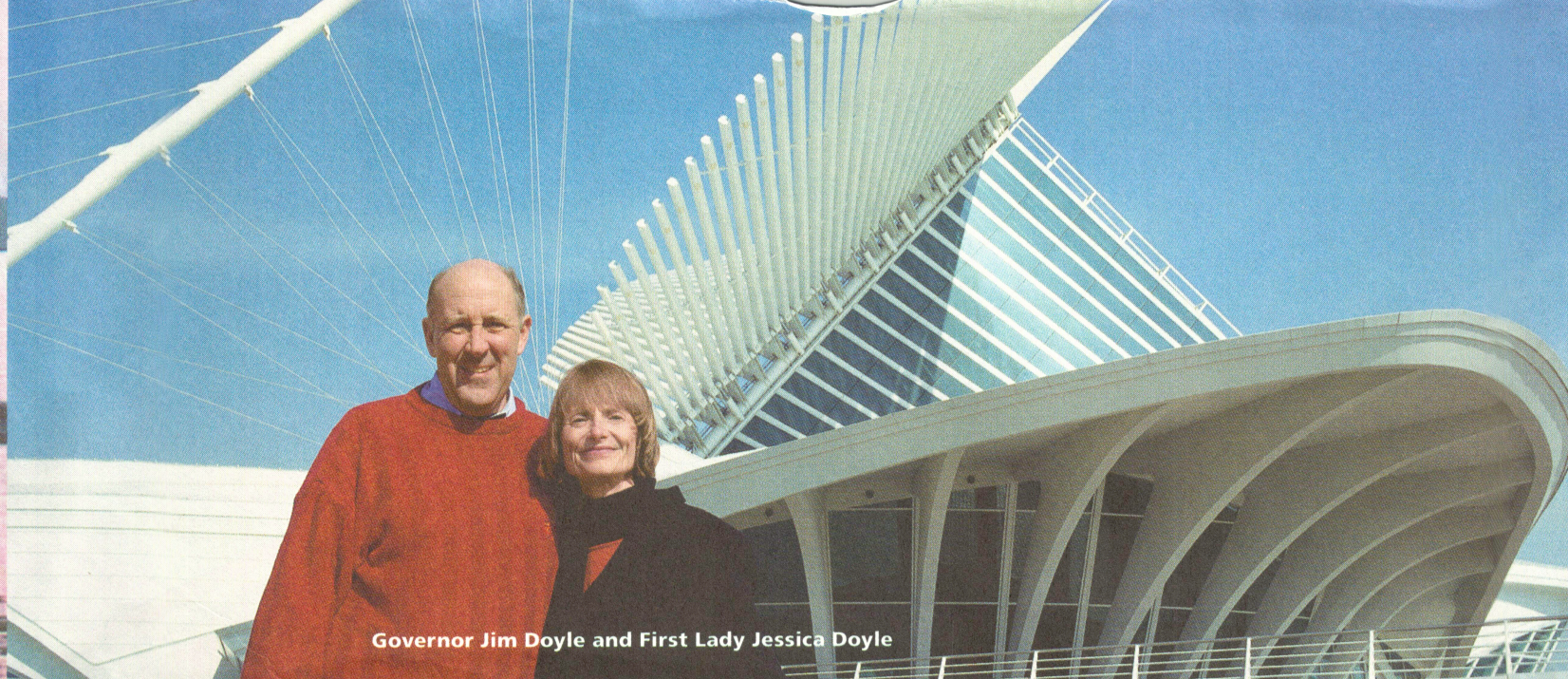


Published at state expense by the Wisconsin Department of Transportation for free distribution.



Governor Jim Doyle and First Lady Jessica Doyle

### Life is full of hard decisions...

### Make an easy one.

Buckling up is not only an easy decision... It's a smart one. In all crashes, you're 4 times more likely to survive if you're wearing a seat belt. Be around for the big decisions in your life.



## Welcome to Wisconsin

WHETHER YOU'RE A WEEKEND VISITOR OR A LIFELONG RESIDENT, Wisconsin is simply a great place to stay a little bit longer. From the crystal clear waters of the Great Lakes to the lively streets of Milwaukee and Madison, we have something to offer everyone.

OUR CITIES OFFER THE COSMOPOLITAN delights of great accommodations, performing arts, outstanding architecture, nightlife and fine dining.



Milwaukee Summerfest



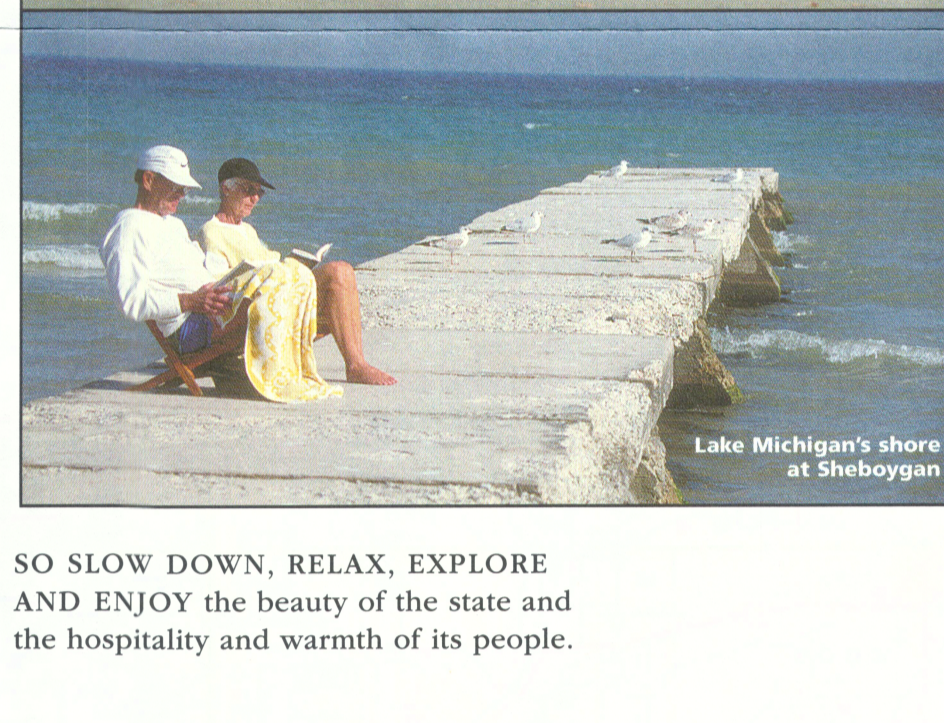
Milwaukee Riverwalk



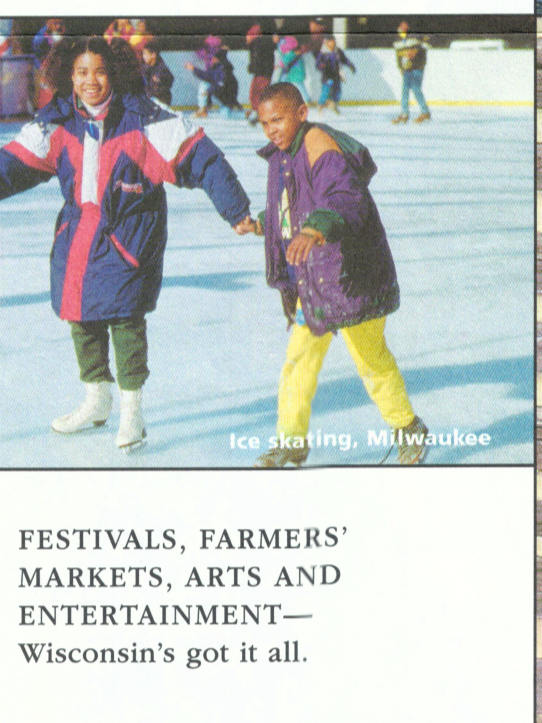
Kendall Depot Elroy-Sparta State Trail



First Fish Pelican Lake Oueda County



Lake Michigan's shore at Sheboygan



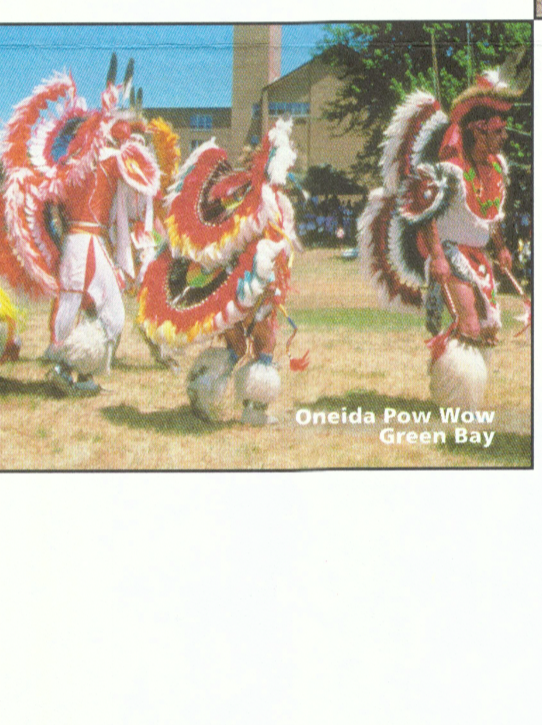
Ice skating, Milwaukee



Shake Rag Alley Mineral Point



Cinco de Mayo Celebration



Oueda Row-Water Green Bay

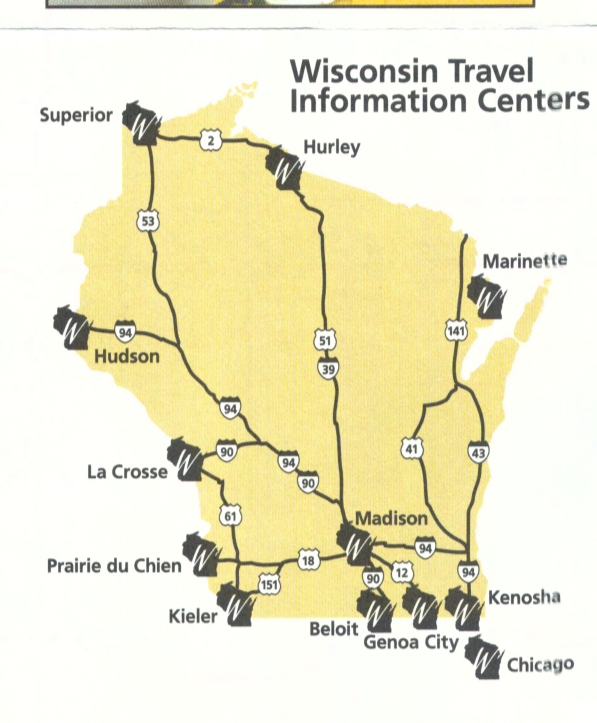
Port Washington pier

SPECTACULAR SCENERY awaits you at every turn in this land of lakes, forests, hidden valleys and rolling countryside. OUR TRAILS, LAKES AND RIVERS offer world-class hiking, biking, fishing, swimming and sailing.

## Wisconsin State Parks, Forests, Recreation Areas and Trails

For camping reservations, call 1.888.WIPARKS (947.2757) TTY: 800.274.7275 Web: www.dnr.state.wi.us/org/land/parks/

Table with columns for State Parks, Forests, Recreation Areas, and Trails. Includes details like location, phone number, and amenities. Includes a 'KEY' section for symbols used in the table.



### SO SLOW DOWN, RELAX, EXPLORE AND ENJOY

the beauty of the state and the hospitality and warmth of its people.

## Stay a little bit longer

### General travel information

You're only a phone call or click away from the following information:

- Maps
- Rest areas and waysides
- Scenic information
- Weather conditions
- Driving conditions

"Travel Easy" construction and rest area brochure 1.800.242.2574 Winter road conditions 1.800.ROADWIS (762.3947) Web: www.dot.wisconsin.gov/travel/index.htm

### Milwaukee area information

- Southeast Wisconsin
- Camera images
- Travel times
- Weather information
- Congestion maps
- Lane and ramp closure data

Web: www.dot.wisconsin.gov/travel/milwaukee/index.htm

### Got a question? Need more information on Wisconsin?

Web: www.wisconsin.gov

### Buckle up—It's the law!

Wisconsin law requires all drivers and passengers to wear seat belts.

- Children up to age 4 must be in a child safety seat.
- Children up to age 8 must be buckled up and should be in a booster seat.

Web: www.dot.wisconsin.gov/safety/vehicle/child/index.htm

### Rediscover the character of America at Wisconsin's historic sites.

Wisconsin Historical Society 608.264.6306 Toll-free: 866.944.7483 (SITE) Web: www.wisconsinhistory.org

### Tourist information

Free information about Wisconsin's tourist attractions, events and accommodations is available 24 hours a day. 1.800.432.8747 (TRIP) Web: www.travelwisconsin.com

