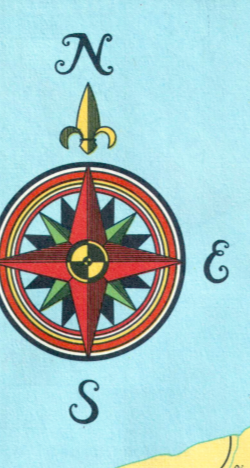


WELCOME TO WISCONSIN

PREVENT FOREST FIRES
HELP KEEP OUR COUNTRY GREEN
WISCONSIN CONSERVATION DEPARTMENT

WISCONSIN VACATIONLAND FOR ALL
The Wisconsin Human Rights Statute Sec. 942.04 guarantees full and equal enjoyment of all places of public accommodation or amusement alike to all persons of every race and color.



The Badger State



Note: Individual, detailed county maps of Wisconsin may be obtained at 20¢ each from the State Highway Commission, State Office Building, 1 West Wilson St., Madison, Wisconsin.

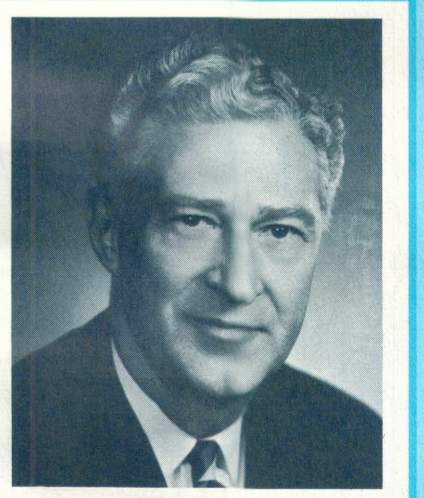
1965 OFFICIAL HIGHWAY MAP OF WISCONSIN

Scale: 1 inch = approximately 13 miles

LEGEND

State or Federal Institution	Public Hunting & Fishing Grounds
Municipality over 10,000	Multilane Undivided
Community under 10,000	Multilane Divided
Wis. State University	State Capitol
Railroad	Airport
County Boundary	County Forest
Lookout Tower	State or National Forest
Wayside	Public Camps & Picnic Grounds
Without Facilities	Indian Reservation
Great River Road	Forest Ranger Station
Portland Cement or Bituminous Concrete	State Numbered Highways
Bituminous	Mileage between Towns & Junctions U. S. Numbered Highways
State Park With Campsite	Mileage Between Stars
Gravel or Stone	Toll Road
Interstate Highway Proposed	Interstate Highway Completed
County Park	Interchange
County Trunk Unsurfaced	Multilane Undivided
County Trunk Letter	Multilane Undivided
County Trunk Surface	River or Stream
Fish Hatchery	County Seat
Dam	Highway Separation
Lake or Flowage	State Tourist Information Center

WISCONSIN COMMUNITIES WELCOME AND HELP INDUSTRY GROW
For information write:
Department of Resource Development,
State Office Bldg.,
1 West Wilson St., Madison



WELCOME TO WISCONSIN
Wonderful Wisconsin beckons to thousands of old and new friends every year. Whether your visit is for business or pleasure, you'll find satisfaction and enjoyment in Wisconsin. Nearly 100,000 miles of fine highways will take you wherever you wish, in any kind of weather. Wisconsin's growing Interstate Highway system is rapidly providing fast, safe access to all parts of the state. New state freeways add more miles of safety and convenience. Wisconsin's businessmen, law enforcement officers, government officials and all her citizens, look forward to welcoming you and serving you. May your trip be pleasant, safe and satisfying. Come back often.

WARREN P. KNOWLES, Governor

1965 WISCONSIN HIGHWAY MAP



FREE FERRY - S. T. H. 113 - MERRIMAC

prepared by the STATE HIGHWAY COMMISSION FOR FREE DISTRIBUTION

SPEED LIMITS: DAY 65 - NIGHT 55 (EXCEPT AS POSTED.)

