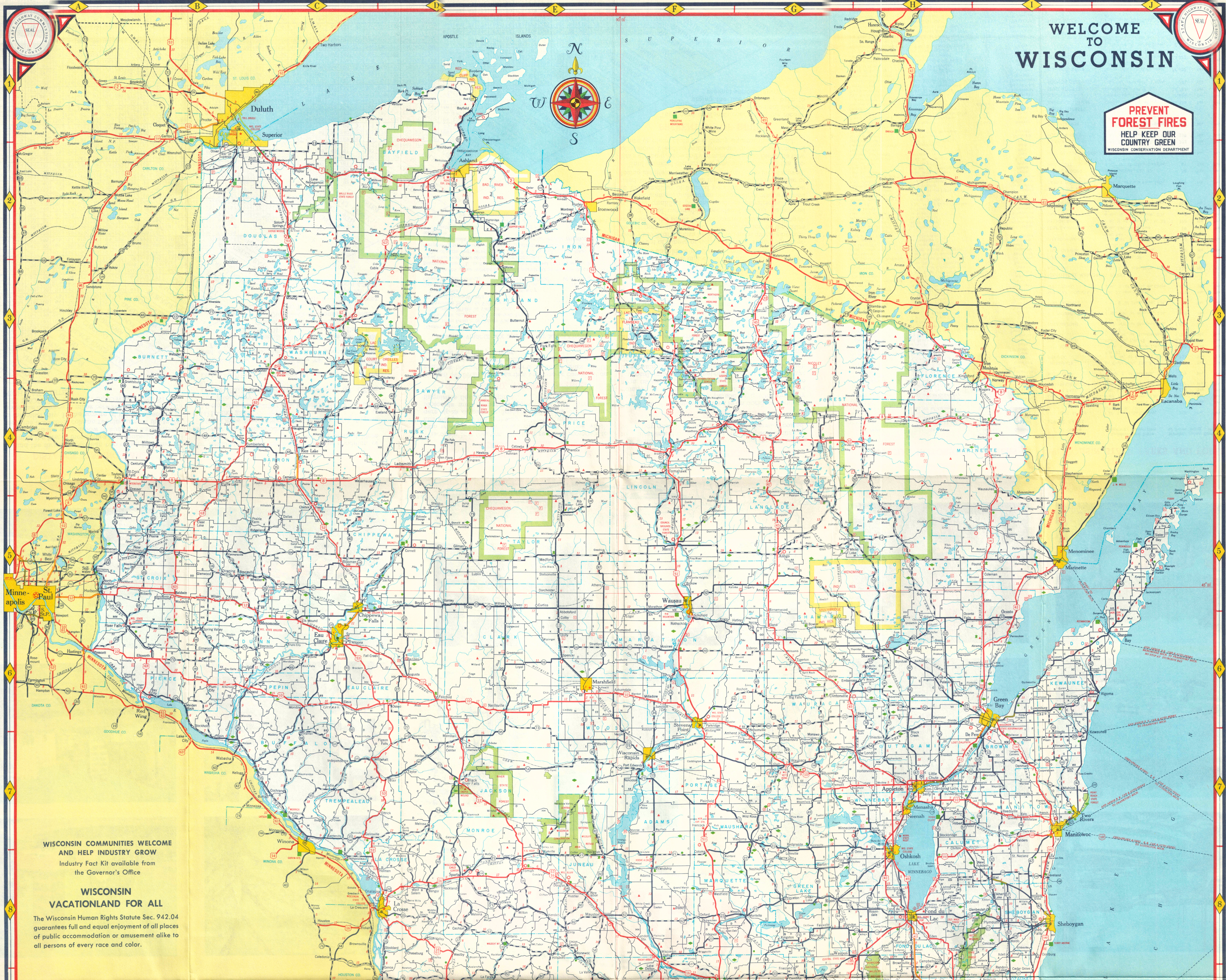


WELCOME TO WISCONSIN

PREVENT FOREST FIRES
HELP KEEP OUR COUNTRY GREEN
WISCONSIN CONSERVATION DEPARTMENT



WISCONSIN COMMUNITIES WELCOME AND HELP INDUSTRY GROW
Industry Fact Kit available from the Governor's Office

WISCONSIN VACATIONLAND FOR ALL
The Wisconsin Human Rights Statute Sec. 942.04 guarantees full and equal enjoyment of all places of public accommodation or amusement alike to all persons of every race and color.

1959
WISCONSIN
Highway Map

OFFICIAL
HIGHWAY MAP
OF
WISCONSIN
ISSUED 1959

Scale: 1 inch = approximately 14 miles

LEGEND

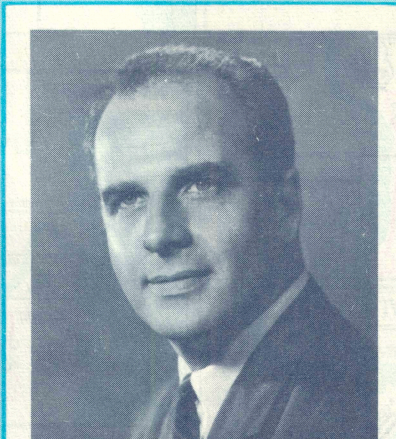
U.S. numbered State Trunk Highway	Four Lane and Dual	Two and Three Lane
Other numbered State Trunk Highway		
County Trunk Highway—Surfaced		
County Trunk Highway—Unsurfaced		
Portland Cement or Bituminous Concrete	Blotuminous	Gravel, Stone, Earth, Gravel

U.S. numbered routes shown in red; not always the best or shortest routes.

Airport	Dam	Wayside
Seaplane Base	Lookout Tower	Roadside Park
County Seat	Fish Hatchery	County Park
Community Under 10000	Forest Ranger Station	State Park, Scenic or Memorial
City Over 10000	National Forest Public Camp and Picnic Grounds	Public Hunting or Fishing Ground
	State or Federal Institution	Allegiance shown between Towns and Precincts



prepared by the
STATE HIGHWAY COMMISSION
for free distribution



WELCOME TO WISCONSIN

- To its 9,000 lakes.
- To its 1,500 trout streams.
- To its 5 million acres of publicly owned forests.

Enjoy the play of the 1958 National Baseball League champions, the Milwaukee Braves; and later in the year, the Green Bay Packers.

America's Dairyland offers one of our nation's widest ranges of outdoor recreational activities, from hunting and fishing to sailing, iceboating, skiing and waterskiing. All these await your pleasure, as do the hundreds of Old World restaurants and modern steakhouses that are scattered throughout our state.

Above all, rely on the warm friendship and hospitality of the people of Wisconsin so that our state becomes for you, as it has for thousands of others, a second home.

In return, all we ask is that you drive carefully, so that both we and you can enjoy the pleasures of Wisconsin for years to come.

Gaylord Nelson
GAYLORD NELSON, Governor

