

WELCOME TO WISCONSIN

PREVENT FOREST FIRES
HELP KEEP OUR COUNTRY GREEN
WISCONSIN CONSERVATION DEPARTMENT



WISCONSIN VACATIONLAND FOR ALL
The Wisconsin Human Rights Statute Sec. 340.75 guarantees full and equal enjoyment of all places of public accommodation or amusement alike to all persons of every race and color.

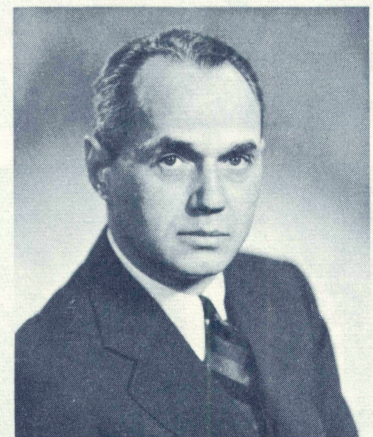
CLASSIFICATION OF HIGHWAYS AS TO GROSS WEIGHT OF VEHICLES
Pursuant to Section 85.46, Wisconsin Statutes, the state trunk and U. S. numbered highways and connecting streets in Wisconsin shown on this map are designated Class "A" as to limitation of weight of vehicles using such highways, subject, however, to posted seasonal and bridge load restrictions which are or may be imposed pursuant to Section 85.54, Wisconsin Statutes.

1956 WISCONSIN HIGHWAY MAP

OFFICIAL HIGHWAY MAP OF WISCONSIN
ISSUED 1956

Scale: 1 inch—approximately 14 miles

- LEGEND**
- | | | |
|--|--|-----------------------------------|
| U.S. numbered State Trunk Highway | As shown on Map | As marked on Road |
| Other numbered State Trunk Highway | | |
| County Trunk Highway—Surfaced | | |
| County Trunk Highway—Unsurfaced | | |
| Portland Cement or Bituminous Concrete | | |
| Bituminous | | |
| Gravel, Stone | | |
| Earth | | |
| U.S. numbered routes shown in red; not always the best or shortest routes. | | |
| Airport | Dam | Wayside |
| Seaplane Base | Lookout Tower | Roadside Park |
| County Seat | Fish Hatchery | County Park |
| Community Under 10000 | Forest Ranger Station | State Park, Scenic or Memorial |
| City Over 10000 | National Forest Public Camp and Picnic Grounds | Public Hunting or Fishing Grounds |
| State or Federal Institution | Towns and Junctions | Mileage shown between |



Wonderful WISCONSIN Welcomes You
We who live in Wisconsin take great pride in our state, with its magnificent forests, its sparkling lakes and streams, its broad highways, thriving industry, and its forward-looking government.
Not the least of our pleasure arises from the privilege we enjoy of sharing these beauties each year with millions of visitors from other states.
To all who vacation with us, and travel our highways, we extend a cordial welcome.
Sincerely yours,
Walter J. Kohler
Governor

