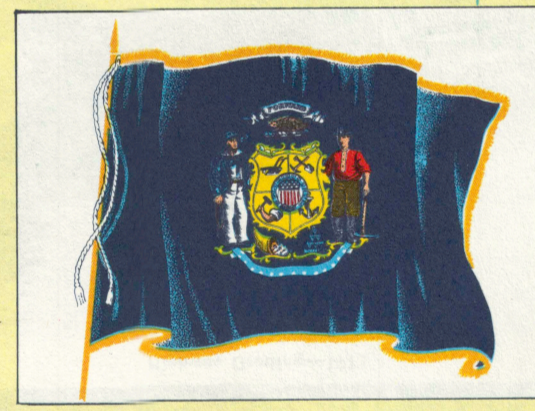


WELCOME TO WISCONSIN

PREVENT FOREST FIRES
HELP KEEP OUR COUNTRY GREEN
WISCONSIN CONSERVATION DEPARTMENT



WISCONSIN VACATIONLAND FOR ALL
The Wisconsin Human Rights Statute Sec. 340.75 guarantees full and equal enjoyment of all places of public accommodation or amusement alike to all persons of every race and color.

1952
WISCONSIN
HIGHWAY MAP

OFFICIAL
HIGHWAY MAP
OF
WISCONSIN
ISSUED 1952

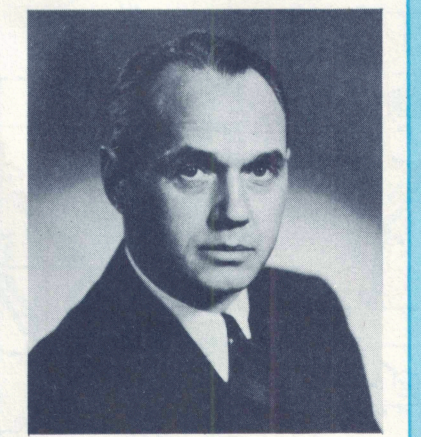
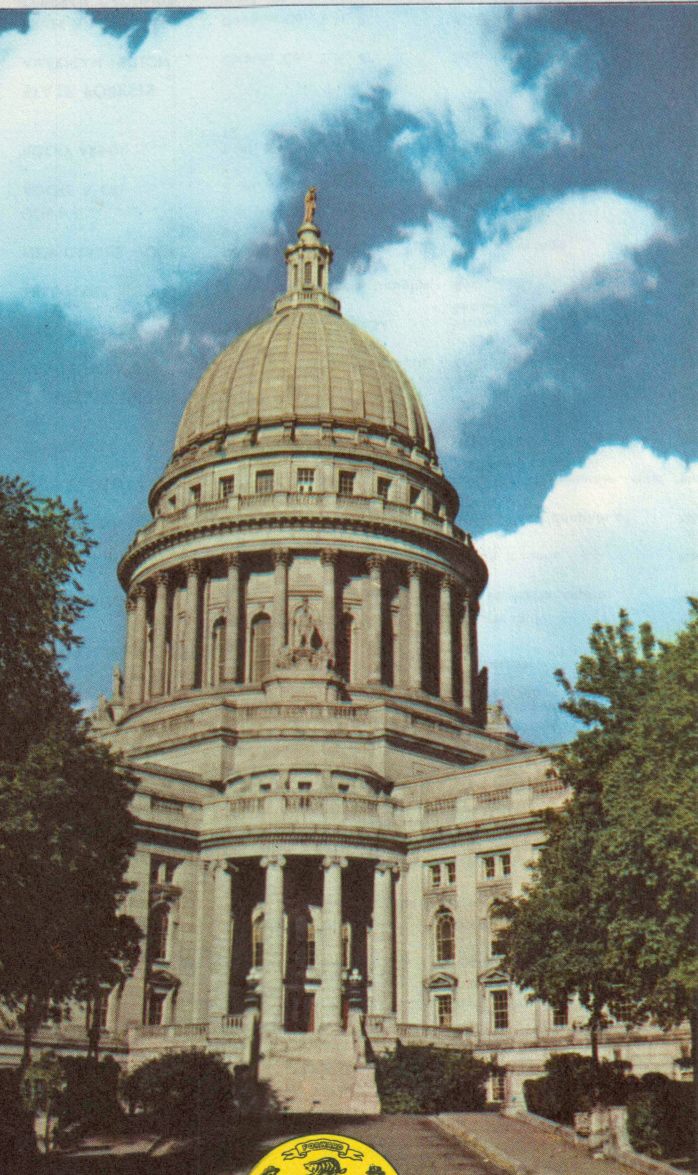
Scale 1 inch—approximately 14 miles

CLASSIFICATION OF HIGHWAYS AS TO GROSS WEIGHT OF VEHICLES
Pursuant to Section 85.46, Wisconsin Statutes, the state trunk and U. S. numbered highways and connecting streets in Wisconsin, shown on this map prepared and published prior to January 1, 1953, are designated Class "A" insofar as limitation upon the use of vehicles upon such highways is concerned, subject, however, to posted seasonal and bridge load restrictions which are or may be imposed pursuant to Section 85.54, Wisconsin Statutes.

STATE HIGHWAY COMMISSION OF WISCONSIN

- LEGEND**
- | | |
|---|-------------------|
| As shown on Map | As marked on Road |
| U. S. numbered State Trunk Highway | |
| Other numbered State Trunk Highway | |
| County Trunk Highway—Surfaced | |
| County Trunk Highway—Unsurfaced | |
| Portland Cement or Bituminous Concrete | |
| Bituminous | |
| Gravel, Stone | |
| Earth | |
| Airport | |
| Seaplane Base | |
| County Seat | |
| Community Under 10000 | |
| City Over 10000 | |
| Dam | |
| Lookout Tower | |
| Fish Hatchery | |
| Forest Ranger Station | |
| U. S. Forest Service Park | |
| State or Federal Institution | |
| Wayside | |
| Roadside Park | |
| County Park | |
| State Park, Scenic or Memorial | |
| Public Hunting & Fishing Ground | |
| Mileage shown between Towns and Junctions | |

FOR DETAILED MAP OF
MILWAUKEE AREA
SEE REVERSE SIDE



WONDERFUL
WISCONSIN
WELCOMES YOU

We of Wisconsin are proud of our rich and beautiful land, adorned with wood and water, our thriving industry, our energetic and friendly citizens, and our forward-looking governments. We enjoy these blessings the more because they are ours to share with so many others. To you all, we extend a most cordial welcome to Wisconsin.

Sincerely yours,
Walter J. Kohler, Jr.
WALTER J. KOHLER, JR.
Governor

