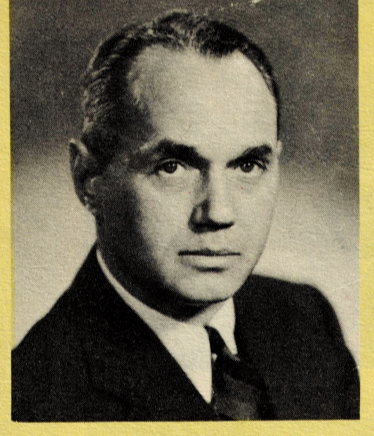




WELCOME TO WISCONSIN

PREVENT FOREST FIRES
HELP KEEP OUR COUNTRY GREEN
WISCONSIN CONSERVATION DEPARTMENT



Wonderful
WISCONSIN
Welcomes You!

We who live in Wisconsin take pride in our magnificent forests, our beautiful lakes and streams, and our rich farm lands. We delight as well in the thriving industry of our state, in its forward-looking, responsive governments, and in the independence, the energy and the friendliness of its citizens.

We enjoy these blessings not alone because they make our own lives more pleasant and fruitful, but because they are ours to share with others. To you who visit and vacation with us, we extend a most cordial welcome to Wisconsin.

Sincerely yours,
Walter J. Kohler, Jr.
Walter J. Kohler, Jr.
Governor

For detailed information concerning the conditions of highways and detours, call or see the nearest Division Office.

Main Office, State Office Bldg., Madison, Tel. 6-4411 - Ext. 685.
Div. 1 - State Office Bldg., Madison, Tel. 6-4411 - Ext. 541.
Div. 2 - 279 N. Johnson St., Milwaukee 25, Tel. 8-8108.
Div. 3 - 310 N. Adams, Green Bay, Tel. Adams 1883.
Div. 4 - Wisconsin Theatre Bldg., Wisconsin Rapids, Tel. 108.
Div. 5 - Rosenthal Bldg., La Crosse, Tel. 2-1170.
Div. 6 - 102 1/2 Center Ave., East Troy, Tel. 5777.
Div. 7 - Court House, Rhineland, Tel. 971.
Div. 8 - 1517 Tower Ave., Superior, Tel. 2927.
Div. 9 - Lancaster, Tel. 999.



Official Highway Map
ISSUED 1951
PREPARED BY
STATE HIGHWAY COMMISSION OF WISCONSIN • MADISON
FOR FREE DISTRIBUTION ONLY

1951
OFFICIAL HIGHWAY MAP OF
Wisconsin
State Highway Commission of Wisconsin

Scale: 1 inch = approximately 14 miles

LEGEND

	As shown on Map		As marked on Road

25
SPEED
LIMIT

Watch For And Obey
These Signs

UNIVERSITY OF WISCONSIN PRESS, INC., MADISON, WIS.

